



Table of Contents

1.	Key Enhancements.....	1
1.1.	Documentation.....	1
1.2.	Templates	1
1.2.1.	Double Base Layer Template	1
1.2.2.	Pyramid Chart	1
1.2.3.	Dot Plot	1
1.2.4.	Statistics Component	2
1.2.5.	Google Search	2
1.2.6.	Icons for Contextual Point Layers	2
1.2.7.	'Simplified for Enhanced Performance' Configuration for Single Map Reports	3
1.2.8.	Additional Template Enhancements	3
1.3.	Publisher	3
1.4.	Designer.....	4
1.5.	Batch Publisher	4
1.6.	Excel Data Manager	4
2.	Key Bug Fixes.....	5
2.1.	Templates	5
2.2.	Publisher	5
2.3.	Batch Publisher	6
3.	Key Known Issues in 6.5.0	6
4.	Upgrading to 6.5.0	6
4.1.	How to upgrade (applies to customers only)	6
4.2.	Compatibility Notes	8
5.	InstantAtlas Support.....	8



1. Key Enhancements

1.1. Documentation

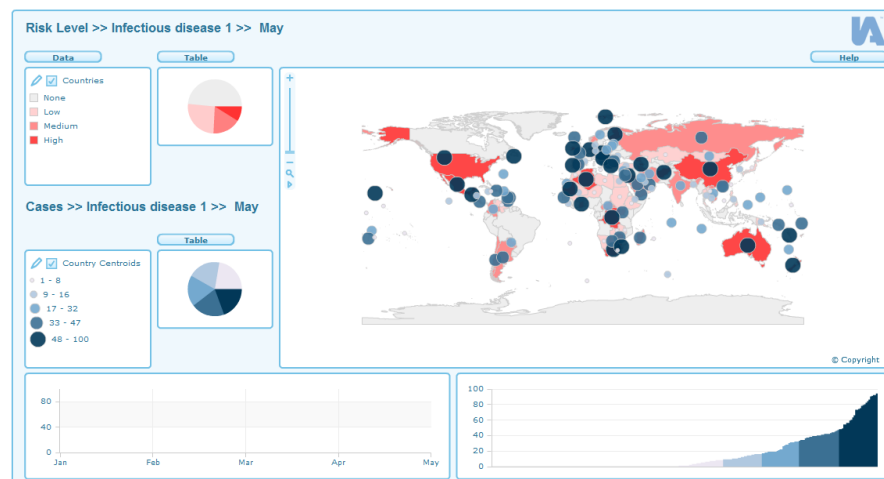
All user guides, which were included in the InstantAtlas installation, are now merged into one combined 'InstantAtlas Desktop User Guide'. This should make it easier for you to find information to specific topics since it is now possible to search for words and phrases across all guides.

1.2. Templates

1.2.1. Double Base Layer Template

This is a new template that is freely available to all those with a license for the Double Map Time Series Template.

This template allows the display of two base layers in one map. It is commonly used to display graduated points over shaded polygons.



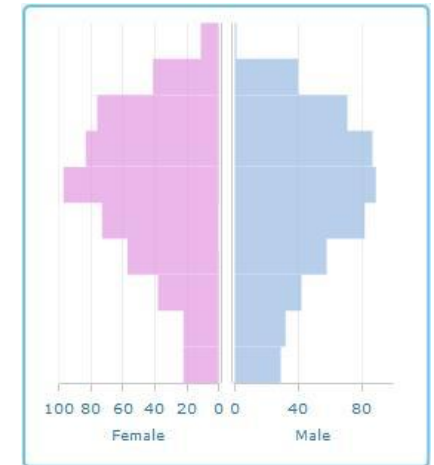
A demo can be viewed here:

<http://www.instantatlas.com/demos/6.5.0/demo1/atlas.html>

The publishing and setup of this template is the same as for the Double Map Time Series Template.

1.2.2. Pyramid Chart

Single Map reports can now optionally include a population pyramid chart. This chart displays data belonging to one map feature in a back to back horizontal bar chart. This chart is typically used to show population structure broken down by age groups and gender.



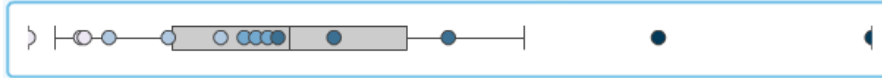
A new dedicated support article describes how to set up a pyramid chart. This can be found in the 'My InstantAtlas' area of the InstantAtlas website.

A demo can be viewed here:

<http://www.instantatlas.com/demos/6.5.0/demo2/atlas.html>

1.2.3. Dot Plot

This new chart shows the spread of data around the mean or median for the selected indicator. It is part of the Single Map Template.



Detailed information about this new component can be found in the InstantAtlas Desktop User Guide in section 'C. The InstantAtlas Designer', subsection 'C.4.3.10. Dot Plot Properties'.

A demo of the Dot Plot is included in this report:

<http://www.instantatlas.com/demos/6.5.0/demo3/atlas.html>

1.2.4. Statistics Component

This new component displays descriptive statistics for the selected indicator. If a filter is applied, the report re-calculates the statistics on the fly to only include the map features that are part of the applied filter.

```
sum: 388.36
mean: 5.47
median: 4.36
min: 1.42
max: 16.17
lower quartile: 3.39
upper quartile: 7.00
interquartile range: 3.61
variance: 9.18
standard deviation: 3.03
```

Detailed information about this new component can be found in the InstantAtlas Desktop User Guide in section 'C. The InstantAtlas Designer', subsection 'C.4.3.11. Statistics Box Properties'.

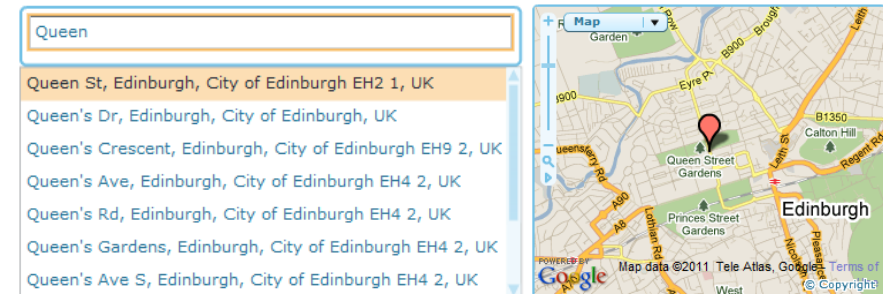
A demo of the Statistics component is included in this report:

<http://www.instantatlas.com/demos/6.5.0/demo3/atlas.html>

1.2.5. Google Search

The Google Search allows the end-user to search the map in an InstantAtlas report if it contains Google background mapping. If one or

more locations are found, it will display them in a drop down list beneath the search box. Selecting an item in the drop down list centres the map on this location and a red marker appears. The search results are restricted to the bounding box of the base geography.



Detailed information about this new component can be found in the InstantAtlas Desktop User Guide in section 'C. The InstantAtlas Designer', subsection 'C.4.3.12. Google Search Properties'.

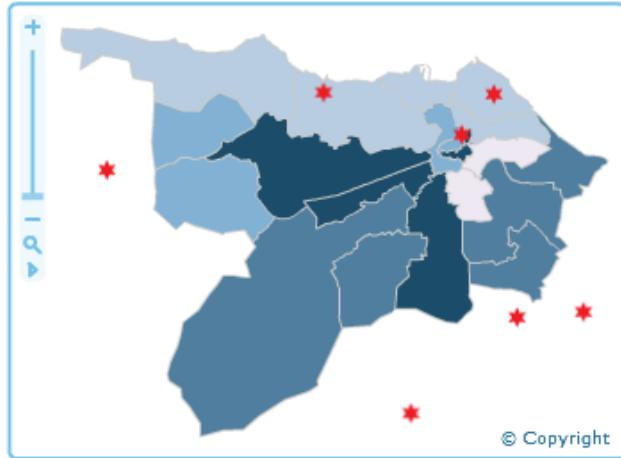
A demo of the Google Search component is included in this report:

<http://www.instantatlas.com/demos/6.5.0/demo3/atlas.html>

1.2.6. Icons for Contextual Point Layers

InstantAtlas now comes with a selection of icons for use as contextual point layers instead of the default circles. There are different shapes and colours (see the 'icons' folder in the IA installation location). You can also use your own images by uploading image files (*.jpg, *.png) into the Publisher.





The 'Town' layer in this report has been set up with icons:

<http://www.instantatlas.com/demos/6.5.0/demo5/atlas.html>

1.2.7. 'Simplified for Enhanced Performance' Configuration for Single Map Reports

This new configuration only includes a Map, a Legend and a Data Table. This makes the initial load time of the report faster and increases the general performance. We recommend you use this configuration option in case you have encountered performance issues with large map files.

1.2.8. Additional Template Enhancements

- It is now possible to change the size of contextual points. This is a new property in the style class for each contextual layer.
- It is now possible to define on a layer by layer basis which contextual layers are displayed or hidden in the legend.
- The templates now support one or more GeoRSS feeds as contextual layers. A demo can be viewed here:

<http://www.instantatlas.com/demos/6.5.0/demo4/atlas.html>

- It is now possible to define aliases for data table columns on an indicator by indicator basis. A demo can be viewed here (change the indicators to see the effect):

<http://www.instantatlas.com/demos/6.5.0/demo3/atlas.html>

- It is now possible to define for each indicator which associates shall be displayed in the data table. A demo can be viewed here (change the indicators to see the effect):

<http://www.instantatlas.com/demos/6.5.0/demo3/atlas.html>

- Long labels in the data table columns now wrap if the column is too narrow to display them on one line.

1.3. Publisher

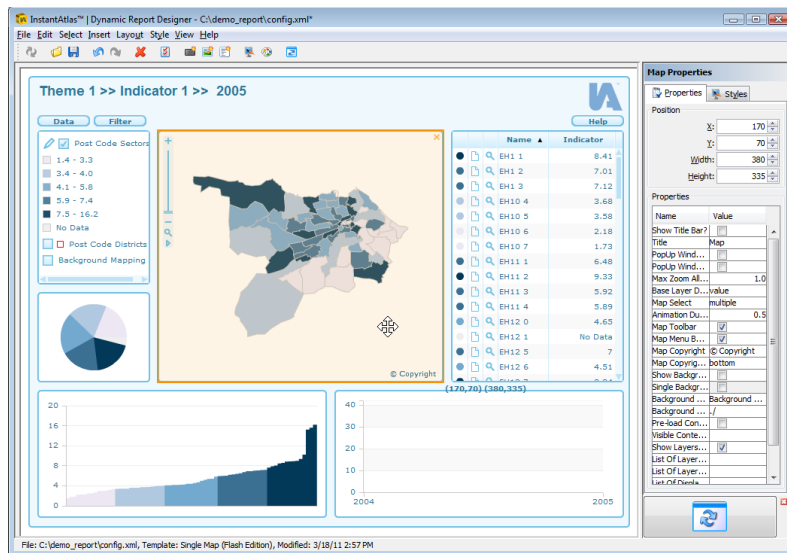
- There is now an option to select the projection of a map file in the 'Properties' dialog of each map layer. This enables the Publisher to re-project a map file for use with Google Maps background without projection information (e.g. prj file)
- The Lambert Conformal Conic projection was added to the supported projections which can be re-projected by the Publisher for the use with Google Maps background.
- The Publisher has improved error reporting.
- There is now an option in the Publisher menu to clear the Publisher memory. This will help resolve issues caused by the Publisher hanging on to references to very large or corrupt map files.
- Authors can now include one or more GeoRSS feeds as contextual layers.



- The default location for unpacking reports is now set to the same folder as the output folder.
- The last screen of the Publisher now includes a button which allows you to save a project file with all relevant settings of the Publisher.

1.4. Designer

- The Designer now has a WYSIWYG (“What-You-See-Is-What-You-Get”) Interface. This interface shows the components as they appear in the report rather than using a wireframe view. Detailed information on the new functionality of the Designer can be found in the InstantAtlas Desktop User Guide in section ‘C. The InstantAtlas Designer’.



Note that it is possible to disable the WYSIWYG interface if necessary using the iap.ini file. Please refer to the InstantAtlas Desktop User Guide section ‘B.4.2 Disabling the WYSIWYG Interface of the Designer’.

1.5. Batch Publisher

- The Batch Publisher now supports Google Maps and ArcGIS Server Online connections as background layers.
- It is now possible to update only the data.xml files in a set of previously published reports without needing to re-create the reports.
- The Batch Publisher can now create a set of reports which contain more than one base geography layers.

1.6. Excel Data Manager

- The default data type for associate columns is now numeric. Please check your Excel workbooks you use for InstantAtlas if they include categoric associates. You will need to set the data type manually in the ‘Metadata’ worksheet for each categoric associate column (for information on how to do this, please refer to section ‘C. The InstantAtlas Excel Data Manager’, subsection ‘E.6.2.2. Setting a Data Type for Associates’ of the InstantAtlas Desktop User Guide). Metadata entries to set associate columns to be of type numeric are now redundant.
- It is now possible to use a * symbol as a wild-card character when defining type and precision for indicators and associates. This makes it possible e.g. for a ‘count’ associate column to have a

precision of 0 across an entire theme without needing to repeat the setting for each indicator. The syntax of all possible settings is described in the InstantAtlas Desktop User Guide in section 'E. The InstantAtlas Excel Data Manager', subsection 'E.6.2.1. Setting the Precision for Indicators and Associates'.

2. Key Bug Fixes

2.1. Templates

- The order of categories in the Advanced Pie Chart legend now matches the order in the config file (if using associate values) or the order of the indicators in the data file (if using indicator values).
- The Advanced Pie Chart now populates with data when an area is selected using URL parameters.
- The Advanced Pie Chart now displays comparison values.
- Regarding export and print issues for reports stored on a web server:
 - Issues encountered using WMS or ArcGIS Online Services as background layers are resolved.
 - When using Google Maps as a background layer a customisable message will pop up when printing or exporting is not possible.
- Problem with base layer sometimes not sitting in correct Google Maps location on start-up is resolved.
- There is now an option to move the map copyright so that it does not overlay the Google Maps copyright.

- Display ranges for map layer labels work when using Google Maps.
- When hovering over dense clusters in the scatterplot, the tooltip does not repeat the same content several times.
- The HTML Profile now accepts most date formats as valid time period names.
- Comparison Table(s) and Metadata Box(es) are now included in the print and export dialog drop down lists. This means they can be printed and exported separately
- When the Data Explorer is expanded by default, the collapse button at the bottom of the component will work as designed.
- Reports now accept black (Hex code: #000000) as a categoric legend colour.
- When enabling tooltips or labels for contextual layers, the report will now show the values of the Feature **Name** Field which was chosen in the Publisher when adding the contextual layer.

2.2. Publisher

- When using Google Maps as background layer, changing the template no longer prevents the Publisher from re-projecting contextual layers.
- The Publisher does not hang on to an error when removing a faulty element (map layer or data file) and attempting to publish again.
- The Publisher can now load project files that include subsets of map layers with spaces in the feature code
- The Publisher no longer strips theme level metatext out of the theme XML files when uploading the xml file into the Publisher.

2.3. Batch Publisher

- Setting stroke width for each map layer (base layer or contextual layer) and fill opacity for each contextual layer is restored.
- By default the fill opacity is 0 (fully transparent) for contextual layers.

3. Key Known Issues in 6.5.0

- Google Maps as a background layer does not support animated zoom in the reports
- Google Maps as a background layer does not work with world files containing Antarctica
- Google Maps might not be suitable as a background layer for countries close to the international date line (e.g. New Zealand, Fiji) because when zooming in, the map sometimes 'loses' the base layer.
- Reports containing Google Maps as a background layer will not export or print with the option 'Rescale to fit page' when the report is stored on a web server
- Google Maps as a background in the Double Map and Double Map Time Series templates will cause map zooming problems if the map navigation is synchronised
- When using certain subversions of Flash Player 9 a filter button label will appear in the report even when there is no filter in the data file. The solution is to delete the filter button out of the config.xml file.

- Locking the aspect ratio of images in the Designer does not work correctly in the Design View. For this reason the functionality to lock the aspect ratio was removed for this release.
- In the Design View of the Designer numeric indicator values appear left aligned in the data table
- Configuration properties, which require a new loading of map layers or the data.xml file, will not update in the Designer
- The grouping of geographic features in the HTML Profile Template does not work for multiple base geographies

4. Upgrading to 6.5.0

4.1. How to upgrade (applies to customers only)



1. Login to **My InstantAtlas** by browsing to <http://www.instantatlas.com/mialogin.aspx>
2. If you have not already registered for an account you should click the New User option.
3. Download the 6.5.0 installer file (.exe) from the Desktop Maintenance area to the computer(s) with your current InstantAtlas installation(s).
4. Double-click the file to run the installer. Choose a language for the installation. The standard installation is recommended for most users. The advanced installation essentially allows you to install additional language features (French, German and Spanish).



5. IAD 6.5.0 installs a v6.5 Excel Data Manager add-in but you will need to go into the Excel options to activate it. Please refer to section 'E.2. The Excel Add-in' in the InstantAtlas Desktop User Guide that comes with InstantAtlas (available via the Windows Start Menu) if you do not know how to do this.



1. Navigieren Sie zu <http://www.instantatlas.com/de/mialogin.aspx> um sich bei **Mein InstantAtlas** einzuloggen.
2. Falls Sie sich noch nicht registriert haben, sollten Sie auf den Link „New User“ klicken.
3. Laden Sie die 6.5.0 Installationsdatei (.exe) herunter und speichern Sie diese auf dem Computer auf dem derzeit InstantAtlas installiert ist.
4. Starten Sie die Datei mit einem Doppelklick. Wählen Sie eine Sprache für die Installation aus. Für die meisten Benutzer wird empfohlen, die Standardinstallation durchzuführen. Die erweiterte Installation ermöglicht Ihnen hauptsächlich, weitere Sprachmodule (Französisch und Spanisch) zu installieren.
5. IAD 6.5.0 installiert ein v6.5 Excel Datenmanager Add-in, Sie werden diesen jedoch in den Excel Optionen aktivieren müssen. Falls Sie nicht wissen, wie das geht, beziehen Sie sich bitte auf das Kapitel 'E.2. The Excel Add-in' im InstantAtlas Desktop Benutzerhandbuch (englisch), das Sie mit der Softwareinstallation erhalten (erreichbar über das Windows Start Menü).



1. Navegue a <http://www.instantatlas.com/mialogin.aspx> para entrar en su cuenta **My InstantAtlas**
2. Si no tiene una cuenta Mi InstantAtlas, haga clic en la opción New User.
3. Descargue el fichero de instalación 6.5.0 (.exe) en el ordenador(es) con su instalación(es) actual de InstantAtlas.
4. Haga clic-doble en el fichero de instalación. La instalación estándar conviene a la mayoría de los usuarios. La instalación avanzada sobre todo permite la instalación de otras idiomas (francés o alemán)
5. IAD 6.5.0 instala un add-in Excel Data Manager v6.5 pero tiene que activarlo en los opciones Excel. Por favor lea el capítulo 'E.2. The Excel Add-in' en el documento InstantAtlas Desktop Guía de Usuario (inglés) instalado con InstantAtlas para más ayuda.

4.2. Compatibility Notes

You may wish to publish a v6.5.0 dynamic report to benefit from the enhancements/bug fixes but retain the data and custom design that you created for an older report. Of the files that contain the data/design, some can be safely copied over from an older report while others cannot. The table below shows the versions of reports it is safe to copy files across from.

File	v6.x report	v5 or older report
Data files (data.xml and supporting theme XML files)	Yes, can be copied to a v6.5.0 report	Yes, can be copied to a v6.5.0 report
Stylesheet (default.css)	Yes, can be copied to a v6.5.0 report. Note that the old style sheet will not contain styles for any components that are new in v6.5.0.	No, cannot be copied to a v6.5.0 report
Configuration file (config.xml)	No, should not be copied to a v6.5.0 report. Please contact InstantAtlas Support if you would like help to upgrade your old configuration file to be used in a v6.5.0 report.	No, cannot be copied to a v6.5.0 report

If you wish to continue creating XML data files for v5 reports you will have to use a v5.x Excel Data Manager add-in. You can have multiple InstantAtlas add-ins in Excel and can switch between them using Excel options for add-ins.

5. InstantAtlas Support

You can find IA support resources at www.instantatlas.com/support.xhtml. InstantAtlas customers can login to their My InstantAtlas account and download a wide range of support resources and access a searchable knowledgebase. If these resources do not provide a solution, please contact your support provider.

