

## Overview Summary (short) Selection: Nottingham Geo-type: District

- [Overview Summary \(short\)](#)

### Overview Summary (short)

#### Population

The table below shows the change in total population between 2001 and 2007.

Table: Total population				
	Nottingham	Nottinghamshire	East Midlands	England
All people, ONS Population Estimates (2001)	268,939	748,809	4,189,622	49,449,746
All people, ONS Population Estimates (2002)	271,630	752,729	4,221,634	49,652,294
All people, ONS Population Estimates (2003)	275,050	756,691	4,254,220	49,866,170
All people, ONS Population Estimates (2004)	278,527	762,402	4,291,385	50,110,688
All people, ONS Population Estimates (2005)	283,219	766,411	4,327,541	50,465,625
All people, ONS Population Estimates (2006)	286,378	769,087	4,364,214	50,762,945
All people, ONS Population Estimates (2007)	288,661	771,865	4,399,637	51,092,032

Source: Office for National Statistics (ONS)

The table below shows the ethnic profile of the local area, with breakdowns by broad ethnic group.

Table: Population by ethnic group				
	Nottingham	Nottinghamshire	East Midlands	England
People in White ethnic group (%) (2006)	233,600 (81.56)	95.48	91.39	88.68
People in White ethnic group, British (%) (2006)	219,200 (76.54)	93.2	88.6	84.19
People in White ethnic group, Irish (%) (2006)	3,300 (1.15)	.64	.8	1.15
People in White ethnic group, Other White (%) (2006)	11,100 (3.88)	1.65	1.98	3.35
People in Mixed ethnic group (%) (2006)	9,200 (3.21)	1.08	1.35	1.63
People in Mixed ethnic group, White and Black Caribbean (%) (2006)	4,900 (1.71)	.46	.57	.54
People in Mixed ethnic group, White and Black African (%) (2006)	800 (.28)	.12	.14	.21
People in Mixed ethnic group, White and Asian (%) (2006)	1,700 (.59)	.27	.36	.49
People in Mixed ethnic group, Other Mixed (%) (2006)	1,800 (.63)	.22	.28	.4
People in Asian or Asian British ethnic group (%) (2006)	22,000 (7.68)	1.8	4.83	5.49
People in Asian or Asian British ethnic group, Indian (%) (2006)	9,000 (3.14)	.95	3.25	2.49
People in Asian or Asian British ethnic group, Pakistani (%) (2006)	10,100 (3.53)	.51	.93	1.7
People in Asian or Asian British ethnic group, Bangladeshi (%) (2006)	1,000 (.35)	.12	.25	.67
People in Asian or Asian British ethnic group, Other Asian (%) (2006)	1,800 (.63)	.2	.4	.64
People in Black or Black British ethnic group (%) (2006)	13,500 (4.71)	.85	1.44	2.76
People in Black or Black British ethnic group, Caribbean (%) (2006)	8,500 (2.97)	.46	.7	1.17
People in Black or Black British ethnic group, African (%) (2006)	3,800 (1.33)	.3	.62	1.37
People in Black or Black British ethnic group, Other Black (%) (2006)	1,100 (.38)	.05	.11	.22
People in Chinese or Other ethnic group, Chinese (%) (2006)	5,400 (1.89)	.52	.61	.74
People in Chinese or Other ethnic group, Other ethnic group (%) (2006)	2,600 (.91)	.33	.37	.69

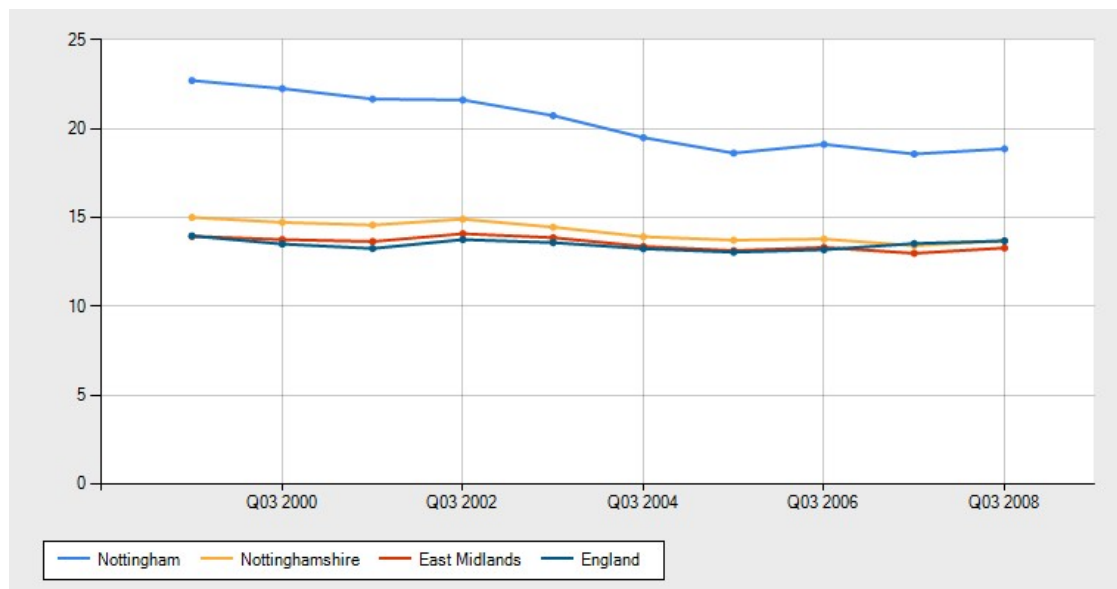
Source: Office for National Statistics (ONS)

[For a more detailed population profile of the local area click here.](#)

#### Deprivation

**Chart: Working Age DWP Benefit claimant rate 1999 to 2008:**

The chart below shows the change over time in the proportion of people of working age who receive any form of DWP benefit in the local area.



The table below shows key low income indicators for the local and comparator areas.

**Table: Key low income indicators**

	Nottingham	Nottinghamshire	East Midlands	England
Working-age DWP benefit claimants (%) (Q03 2008)	37,580 (18.87)	13.7	13.29	13.69
Income Support claimants (%) (Q03 2008)	17,370 (8.72)	4.69	4.84	5.58
Pension Credit claimants (%) (Q03 2008)	14,770 (36.22)	20.77	22.88	23.63

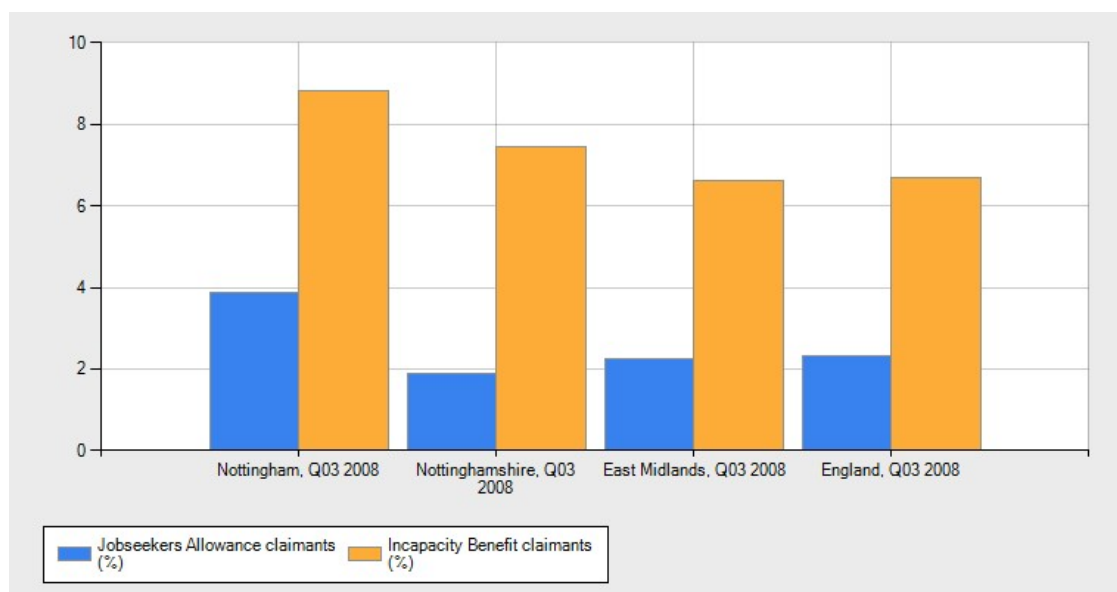
Source: Department for Work and Pensions (DWP)

[For a more detailed deprivation profile of the local area click here.](#)

### Economy

**Chart: Key workless indicators:**

The chart below shows key worklessness indicators for the local and comparator areas.



The table below shows 'resident earnings' (the earning levels of people living in the local area including those who commute out to work outside the local area); and workplace earnings (the earning levels of people working in the local area including those who commute in from outside the local area).

**Table: Resident and workplace earnings**

	Nottingham	Nottinghamshire	East Midlands	England
Resident earnings (median) (Earnings) (2007)	325.9	358	353.6	381.2
Workplace earnings (median) (Earnings) (2007)	352.6	337.6	345	380.7
Workplace earnings (lowest 25%) (Earnings) (2007)	221.6	213.5	214.7	231.8

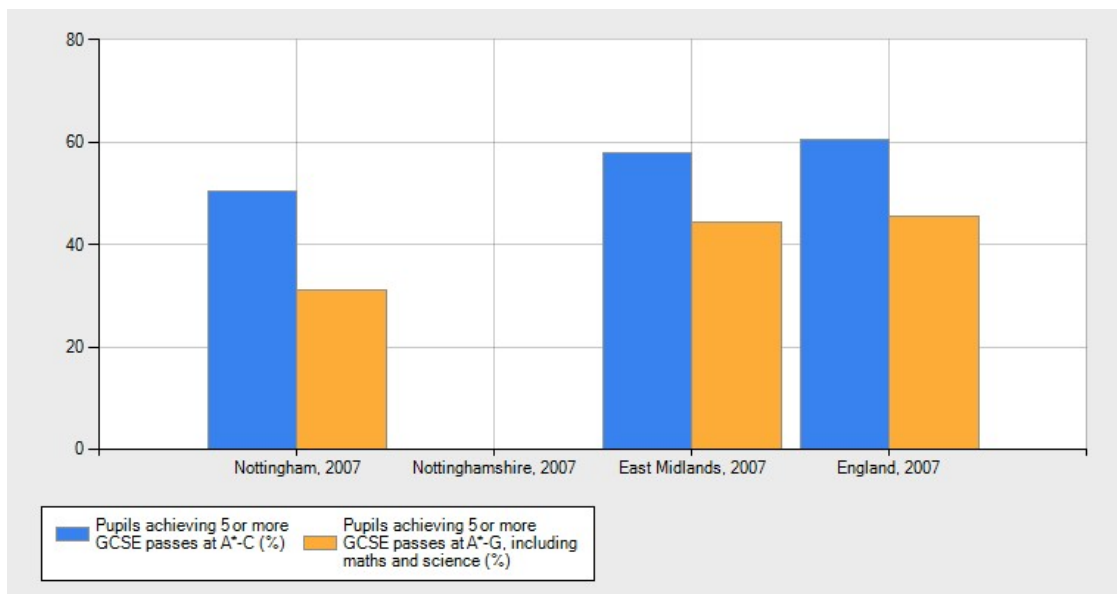
Source: Annual Survey for Hours and Earnings (ASHE)

[For a more detailed economy profile of the local area click here.](#)

### Education

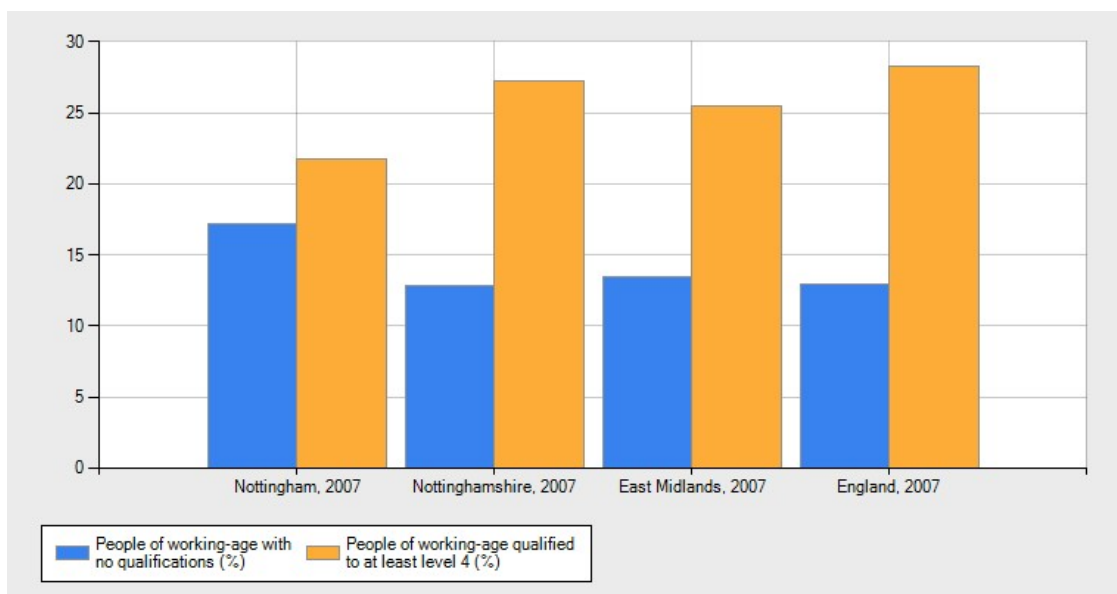
**Chart: Percentage achieving 5 or more GCSE grades A\*-C:**

The chart below shows the proportion of pupils achieving expected targets at Key Stage 4 (GCSE).



**Chart: Working age adults with no qualifications and degree level qualifications:**

The chart below shows the proportion of working age adults with (a) no qualifications; and (b) degree or higher-level qualifications.



[For a more detailed education profile of the local area click here.](#)

### Health

The table below shows estimates of life expectancy at birth for males and females in the local and comparator areas.

Table: Life expectancy at birth				
	Nottingham	Nottinghamshire	East Midlands	England
Male life expectancy at birth (Years) (2005-2007)	74.6	77.6	77.6	77.6
Female life expectancy at birth (Years) (2005-2007)	80.1	81.6	81.6	81.8

Source: Office for National Statistics (ONS)

The table below shows the overall mortality rate and mortality rate from key causes, for the local and comparator areas.

Table: Mortality from key causes				
	Nottingham	Nottinghamshire	East Midlands	England
All-age all cause mortality (NI 120) (%) (2007)	724	596.9	585	579.4
Cancer mortality rate (Rate per 100,000 population) (2005-2007)	138	118.1	114.4	115.5
Circulatory disease mortality rate (Rate per 100,000 population) (2005-2007)	108	72.8	78.8	79.1
Suicide mortality rate (Rate per 100,000 population) (2005-2007)	11.5	7.4	7.7	7.9

Source: Department of Health (DoH)

The table below shows the number and proportion of people receiving key DWP benefits as a result of poor health, for the local and comparator areas.

Table: People receiving disability benefits				
	Nottingham	Nottinghamshire	East Midlands	England
Disability Living Allowance claimants (%) (Q03 2008)	18,680 (6.47)	5.63	5.03	4.8
Attendance Allowance claimants (%) (Q03 2008)	7,430 (18.22)	15.09	14.86	14.64
Incapacity Benefit claimants (%) (Q03 2008)	17,590 (8.83)	7.45	6.62	6.71

Source: Department for Work and Pensions (DWP)

[For a more detailed health profile of the local area click here.](#)

## Housing

Chart: Housing condition:

The chart below shows key indicators of housing condition for the local and comparator areas.



The table below shows the mean, median and lower quartile house prices in the local area over the last quarter.

Table: House prices				
	Nottingham	Nottinghamshire	East Midlands	England
House price (median) (£) (Q04 2008)	100,320	123,000	131,000	165,000
House price (mean) (£) (Q04 2008)	123,190	145,723	156,398	207,726
House price (lowest 25%) (£) (Q04 2008)	78,000	91,000	100,000	117,500

Source: Communities and Local Government (CLG) / Land Registry

[For a more detailed housing profile of the local area click here.](#)

## Crime

**Table: Recorded crime offences**

	Nottingham	Nottinghamshire	East Midlands	England
Violence Against the Person, notifiable offences recorded by the Police (rate per 1,000 people) (2008)	9,150 (31.7)	13.84	17.13	17.52
Burglary in a Dwelling, notifiable offences recorded by the Police (rate per 1,000 households) (2008)	4,588 (39.51)	16.08	14.03	13.17
Robbery, notifiable offences recorded by the Police (rate per 1,000 people) (2008)	1,375 (4.76)	.88	1.12	1.61
Theft from a Motor Vehicle, notifiable offences recorded by the Police (rate per 1,000 people) (2008)	5,601 (19.4)	10.62	8.27	7.96
Theft of a Motor Vehicle, notifiable offences recorded by the Police (rate per 1,000 people) (2008)	1,572 (5.45)	3.41	2.93	3.13

Source: Home Office

[For a more detailed crime profile of the local area click here.](#)

## Transport

The table below shows the number and proportion of people with no car or van in the local areas and comparator areas.

**Table: Households with no car or van**

	Nottingham	Nottinghamshire	East Midlands	England
Households with no cars or vans (%) (2001)	52,167 (44.93)	23.68	24.25	26.84

Source: Census 2001

[For a more detailed transport profile of the local area click here.](#)

[See the Data View for all the datasets in this report at LSOA level](#)

[^ top ^](#)