

## Welcome to the InstantAtlas Monthly E-Bulletin



Friday, 27 March 2009

**Hello Andrew,**

In this month's edition we feature the **C4EO Centre for Excellence and Outcomes in Children and Young People's Services** web site and their recently published Progress Maps, which aim to assist users to understand "what works": evidence that has been shown to improve outcomes for children and families.



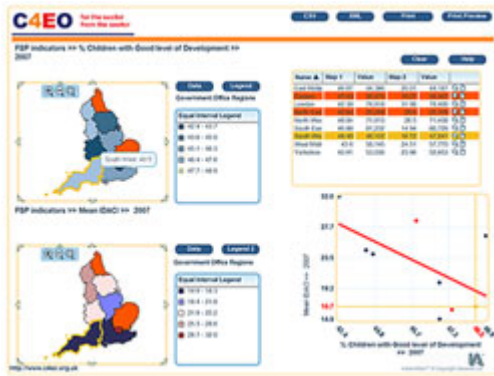
The month's **Spotlight** is cast on international **Socio-economic Development**, we have selected three recent client examples from Europe, where InstantAtlas has been used to present and report on key economic indicators and trends.

We have updated the **Local Information System Resource Pack** (at [www.instantatlas.com/lis](http://www.instantatlas.com/lis)) with some new documents, in particular a supplementary report to the generic LIS business case report from North East Lincolnshire. This provides additional business case material collated from customers and links to material that has been published since the North East Lincolnshire report was written.

We hope you find this month's edition of great interest.

**David Carey**  
Marketing Manager  
[david.carey@geowise.co.uk](mailto:david.carey@geowise.co.uk)

Featured Application  
C4EO



## Centre for Excellence and Outcomes in Children and Young People's Services

The **Progress Map** is an interactive web-based tool. It aims to help professionals access and apply the "what works" evidence that C4EO has collected, which has been shown to improve outcomes for children, young people and their families

*The Centre for Excellence and Outcomes in Children and Young People's Services (C4EO) has used InstantAtlas as a core component of the interactive, web-based tools it is developing to help professionals access and apply the 'what works' evidence collected by the Centre to improve outcomes for children, young people and families.*

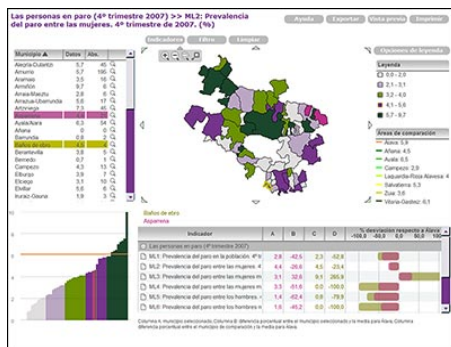
*Using InstantAtlas (with excellent technical support from Geowise) has allowed us to develop and launch complex, interactive tools in a very short period of time. Though it is still early days, feedback so far has been overwhelming positive.*

**Jez MacDonald | Web Development Manager | Social Care Institute for Excellence (SCIE)**

The CEO4 Progress Map is available from [http://www.c4eo.org.uk/Progress\\_Maps](http://www.c4eo.org.uk/Progress_Maps)

[Back to Top of Page ^](#)

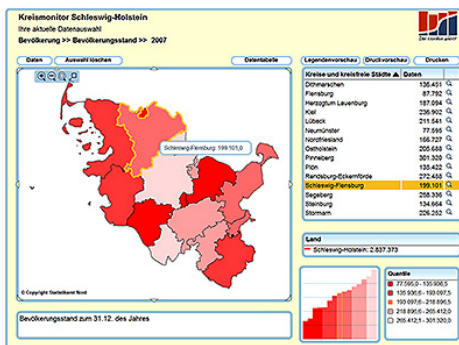
## Client Spotlight – Socio-economic Development



## Observatory, Álava, Spain

The Observatorio Social de Álava was created as a tool for sharing information on the activities of social services in the historic territory.

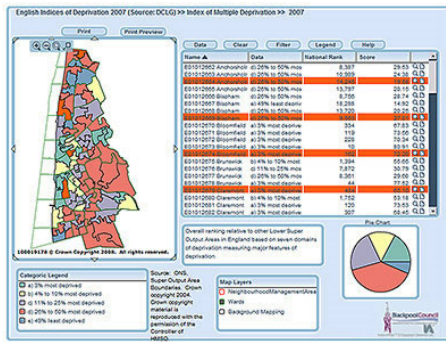
[View Report](#)



## Statistical Office of Hamburg and Schleswig-Holstein, Germany

The new online maps for Schleswig-Holstein make it possible for different audiences to gain a quick overview of the structure and trends in each district.

[View Report](#)



## **Blackpool Council, United Kingdom**

This Instant Atlas display was created to show viewers custom ranges rather than dividing the data into equal intervals or quantiles for the Index of Multiple Deprivation 2007 and its seven domains of deprivation. – [Read on](#)

[View Report](#)

# InstantAtlas Resource Packs

## Behavioral Risk Factor Surveillance System (BRFSS)



[InstantAtlas](#) is now well-established in the United States and United Kingdom and used by state health departments, regional and local public health authorities. It is ideal for presenting data values and trends in a spatial context to internal and external audiences. e.g. **demographic data, epidemiological statistics, health indicators.**

InstantAtlas serves equally well as a tool for monitoring performance of health resources and presenting survey results. Departments of Health in ten US States are implementing this software.

We have included some recent BRFSS examples on our website some of which are live operational applications, others are demonstration samples to show the power and flexibility of InstantAtlas

For further details visit our [BRFSS Examples](#)

## Crime Mapping – Amethyst Project



The Amethyst Project is part of the crime reduction partnership in Cornwall. The **Cornwall Crime Explorer** is aimed at a non-expert end-user audience across the local partnership and external citizens. It illustrates a number of good practice concepts including easily understandable categorical classes, use of recognised colour shading and extensive descriptive metadata notes.

The atlas is based on the Performance Analysis Template in stand-alone mode with statistics being published quarterly by crime analysts using Excel. It offers a cross-cutting view of a range of indicators, in this case crime types, with the flexibility to view trends in a pop-up line graph.

[Read the New Amethyst Case Study](#)  
(PDF)

## Business Benefits for LIS Development



We have updated the **Local Information System Resource Pack** (at [www.instantatlas.com/lis](http://www.instantatlas.com/lis)) with some new documents, in particular a supplementary report to the generic LIS business case report from North East Lincolnshire.

[N E Lincolnshire Data Observatory Report](#)  
(PDF)

[Back to Top of Page ^](#)

## Seminars & Conferences

Where to see InstantAtlas

### **LARIA 2009 Annual Conference - 'Rising to the Challenge'** **30th March - 1st April 2009 - Loughborough University, Leicestershire, UK**

Held at a university venue over 3 days during late March or early April each year, the Conference attracts upwards of 130 delegates to discuss topical public research issues and hear about ways to address current and future challenges.

### **BURISA 2009 Annual Conference** **"Location, location, location - Whither Geographical Information"** **14th May 2009 - Royal Society, 6-9 Carlton House Terrace, London, UK**

This year's BURISA Conference is the ideal opportunity to catch up with progress and issues in geographical information, demystify the jargon and look ahead to future developments.

### **URISA's Second GIS in Public Health Conference** **June 5-8, 2009 - Providence, Rhode Island, US**

The Urban and Regional Information Systems Association (URISA) is hosting the second specialty conference to explore the many uses of GIS for public health access, processes, and decision-making. – [Click here for Further details of the Conference](#)

### **North American Association of Central Cancer Registries (NAACCR)** **2009 Annual Conference - June 13-19, 2009 San Diego, California, US**

This year's conference, "**Charting the Course to a New World in Cancer Surveillance**" will highlight new directions in cancer surveillance with current and future technologies in the diagnosis and treatment of cancer, as well as innovations in bioinformatics and genetics as these impact the cancer data collection

InstantAtlas will be demonstrated at these conferences, if you wish to be given a demo at the event email us at [marketing@geowise.co.uk](mailto:marketing@geowise.co.uk)

[Book an Appointment](#) with an [InstantAtlas Representative](#)

[Back to Top of Page ^](#)

InstantAtlas  COMING SOON ™

[Back to Top of Page ^](#)

**Free 30 Day Trial of InstantAtlas**  
**Download Today or Order on CD**

This e-mail and any attachments are confidential and may be protected by legal, professional or other privilege. If you are not the intended recipient you should not store it, copy it, re-transmit it, use it or disclose its contents, but should return it to the sender immediately and delete your copy from your system. The views expressed are those of the sender and not necessarily those of GeoWise Limited.

Please note that whilst we scan all e-mails for viruses we cannot guarantee that any e-mail is virus-free. Please be advised that we expressly reserve the right to monitor email content for the purposes of ensuring compliance with legal requirements and company policies and your sending to, or receiving from, us of any email constitutes your agreement to these terms.

GeoWise Limited, Quality Court, 28 Maritime Lane, Edinburgh, United Kingdom | Company No. SC177156  
GeoWise Limited | [Privacy Policy](#) | Tel: +44 131 624 8935 | Fax +44 131 624 8936

[UNSUBSCRIBE](#) from GeoWise Marketing