



In this **June Edition** of the InstantAtlas Bulletin we put the spotlight on **Government Office for London's** [GOL] recently published performance data views known as 'Data Explorer's. We also show the **East Midlands Public Health Authority** [EMPHO] interactive maps of teenage conception data for all Local Authorities in England, using InstantAtlas and the Community Indicators Victoria interactive mapping and analysis tool to enable visual communication of wellbeing indicators.

David Carey
Marketing Manager
david.carey@geowise.co.uk

Events

Join us at our **Free JSNA Webinar July 3rd – 10:30am UK**

Using a Local Information System (LIS) to support Joint Strategic Needs Assessment (JSNA)

Stockport MBC and **Stockport PCT** have completed the first stage of their **JSNA** to pull together all relevant information, undertake analyses and submit their response. This work utilised their existing **Local Information System**, Stockport Profiling Live, to speed up the process of pulling together relevant data down to small area levels. The next stage that involves embedding JSNA in the commissioning process both organisations are seeking to move away from a reliance on static documents to support live data reporting. They are currently working in a number of areas to tune their data sharing platform to make this as effective as possible for this purpose.

The JSNA is just one example of many multi-partner strategic initiatives that require a common and consistent evidence-base. Even for those not directly involved in this JSNA process, this online seminar is of relevance in demonstrating the value of data exchange and reporting tools within local partnerships.

Presented by

Emma Dowsing, Research and Intelligence Manager **Stockport MBC**

Hosted by

Mike Forster, Managing Director, **GeoWise Limited**

Date: Thursday 3rd of July @ 10:30 am UK – Duration 1 Hour

[Go To Registration Page](#)

Upcoming Webinars

InstantAtlas German Health Webinar
[German Language]
Thurs, 17 July 2008, 10:30:00 | CEST Time

[Registration Page – Opening Shortly](#)

InstantAtlas Public Sector Webinar | Australia & New Zealand

Topic Overview

Customer Implementation of InstantAtlas
Discover how they presented data to their audiences before InstantAtlas and how our software has dramatically improved this process.

Australian Webcast | Wed, 13th August
7AM UK - 4.00PM, Brisbane

[Go To Registration Page](#)

New Zealand Webcast | Thur, 14th August
11PM UK – 10:00AM, Wellington

[Go To Registration Page](#)

Seminars & Conferences

ESRI Health GIS Conference: Shaping Global Health
Renaissance Washington D.C. Hotel, Washington | Sept 28 - 1

GeoWise is a Platinum Sponsor of the ESRI Health GIS Conference

More than 400 health and human services professionals are expected to gather for the 2008 Health GIS Conference. Join us for this inspiring, collaborative event dedicated to improving health and human services worldwide. Share and discuss successful approaches to using geography to improve health care delivery; public health; and hospital preparedness, research, management, and policy decisions.

Meet us there at **Booth 6** and Register today
http://www.esri.com/events/health/register_hotels/register.html

Event Reports

AGI Health Special Interest Group Event - NHS Digital Mapping Data framework

The new NHS Digital Mapping Data framework agreement enables NHS organisations to call off from a menu the specific mapping data with the appropriate level of coverage that meets their organisational requirements. GeoWise exhibited at the AGI Health Special Interest Group event on the 20th May in Leeds which was organised to inform AGI members and NHS colleagues about the new framework. Speakers at the event confirmed that digital mapping data licenced under the new framework can be used in InstantAtlas. For further information about the new framework please visit:

<http://www.ic.nhs.uk/statistics-and-data-collections/population-and-geography/nhs-digital-mapping-agreement>

Previous Webinars

Visit our Events Page to view our Webinar Archive - <http://www.instantatlas.com/events.xhtml>

EBulletin Archive

Review previous bulletins at http://www.instantatlas.com/Email_Archive.xhtml

Featured Applications

Government (GOL)

Data Explorers produced by Government Office for London

As we highlighted in the May edition of this eBulletin, **GOL** has recently published a new set of performance data views, called 'Data Explorers', at a range of geographies for the Greater London area.

They are available from <http://www.gov-london.gov.uk/tools/toolsindex.htm>



In the last few weeks they have been re-branded and re-published using Flash technology. They contain the currently available indicators that comprise the 198 National Indicator Set (NIS). The National Indicator Set (NIS), announced on the 11 October 2007 as part of the Comprehensive Spending Review, underpins the new local performance framework.

James Jervis at GOL who developed the outputs - "We have been using InstantAtlas for over two years as a means to disseminate data to members of staff and, more recently, to external stakeholders via our web-page. The Data Explorer has proven to be an invaluable tool as part of the Local Area Agreements (LAA) process by providing staff with a single, consistent source of comprehensive data, covering the National Indicator Set (NIS) as well as other key indicators. The success of the tool lies in the fact that it allows easy access to over 180 datasets and presents this information in a clear and easy to understand format. Staff across our organisation, from senior managers to support staff, have commented on how useful and simple the tool is to use"

GeoWise discussed the possibility that GOL could make the set of 198 Performance Indicators (PIs) available to others in InstantAtlas-ready format. John Maslen, Government Solutions Director, says "We have had a positive reaction to GOL's offer. A number of Boroughs are interested in using the underlying data files of indicators to create their own custom versions. It should certainly generate efficiencies through cutting manual data processing work. Those customers using InstantAtlas Server will load and manage this data in their Local Information System (LIS)". GOL has also offered to notify all interested parties when they make changes to their data files so updates can be downloaded.

If you are interested in using this data from GOL please email support@geowise.co.uk.

GeoWise has an active network of customers across UK Government Offices and Regional Observatories. This could be a model that others consider adopting.

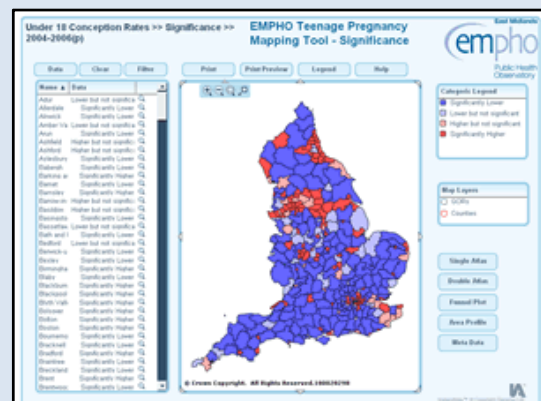
Health (EMPHO)

East Midlands Public Health Observatory (EMPHO)

Teenage Pregnancy Interactive Mapping Tool
<http://www.empho.org.uk/datastore/maps/tpmaps.asp>
[X](#)

EMPHO has produced interactive maps of under 18 conception data, for all Local Authorities in England, using InstantAtlas from Geowise. Maps are now available with the latest 2006 (provisional) data, along with comparators including deprivation and education data. The interactive mapping tool has also been improved, allowing the user to view the data in a number of different ways, including Significance mapping, Funnel Plots and Area Profiles

[View EMPHO Templates](#)



Health (CIV)

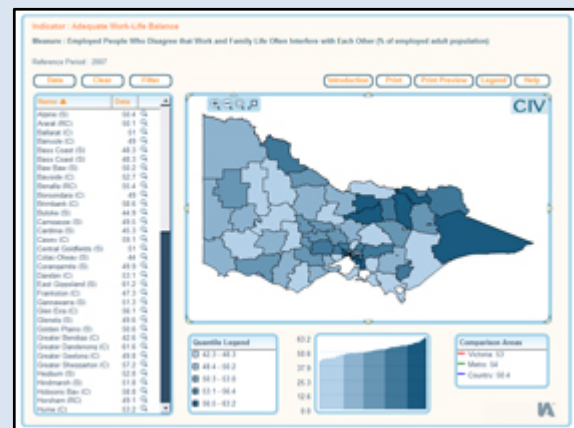
Community Indicators Victoria (CIV) [Australia]

CIV is a collaborative project hosted by the McCaughey Centre, School of Population Health, University of Melbourne.

CIV has developed an online Geographic Information System (GIS) which is an interactive mapping and analysis tool to enable visual communication of wellbeing indicators.

The Wellbeing Map uses InstantAtlas to present wellbeing information in a geographical context, revealing spatial variations and patterns across Victoria.

[View Wellbeing Map](#)



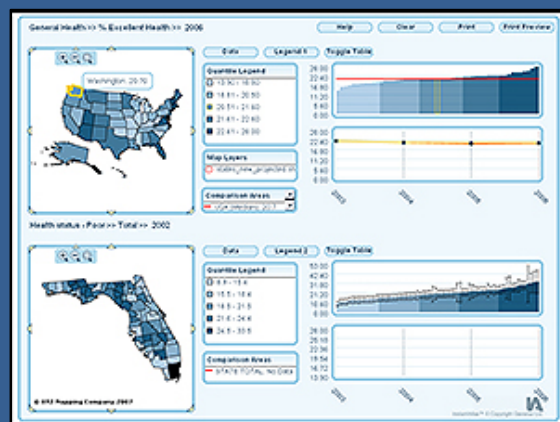
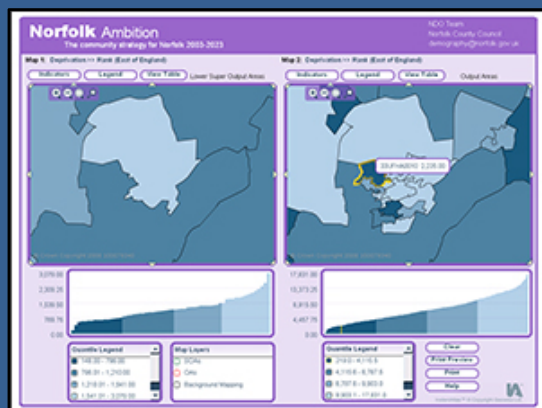
Product News

New Double Map Template to be released

GeoWise have been working on a new 'Double Map with Time Series' template, part of the Double Map Family that supports time series data and the side-by-side presentation of data at different geographies.

The **Double Map Time Series** template combines two maps with their own dedicated tables, bar charts and time series charts. The spatial data for each map can be different and it is therefore possible to thematically map the same, or different, indicator data for two different geographies. This template can also be used to compare different time series indicator data over the same geographies.

Contact [Sales](#) for more details



New InstantAtlas Customers

GeoWise would like to welcome the following organisations as new clients of InstantAtlas in Spring 2008

Australia	AEDI National Support Centre in Murdoch Children's Research Institute at Centre for Community Child Health, Victoria.
Belgium	Observatoire de l'Enfance, de la Jeunesse et de l'Aide à la Jeunesse, Bruxelles
Germany	Federal Health Monitoring (Federal Statistical Office DESTATIS), Bonn Statistisches Landesamt Rheinland-Pfalz
Italy	Hapax Pubblicità di Belfiore e c. S.a.S, Aosta, Italy
Spain	SIIS Centro de Documentación y Estudios, San Sebastián
United Kingdom	Southampton City PCT, Hampshire PCT, Isle of Wight PCT, Kingston PCT, Salford PCT, Kirklees PCT, Havering PCT, Bristol PCT, Hull PCT, City and Hackney PCT, Kent Public Health Observatory. CB Richard Ellis Limited, Doncaster Metropolitan Borough Council Home Office Research Development & Statistics, London Institute of Education, London Lincolnshire County Council, North East Lincolnshire Council, St Andrews University Worcestershire PCT Wolverhampton Partnership
Republic of Ireland	National Institute for Regional and Spatial Analysis (NIRSA)
United States	New Hampshire Department of Health and Human Services Louisiana Department of Health & Hospitals, Mississippi State Health Department, Virginia State, Department of Health, West Virginia Bureau for Public Health, Wyoming Department of Health.

InstantAtlas CD Bundle Offer

GeoWise are offering all **NEW** InstantAtlas Desktop customers a **FREE** introductory Resource CD bundled with Training Videos, Webinars, User Manuals and Template Samples.

To receive your **FREE** Resource CD paste your activation code into an email, in the subject header type '**Free Resource CD**' and send to: marketing@geowise.co.uk.

Please Note | The InstantAtlas Free CD offer is only applicable to representatives of Companies and Organisations, who have activated the InstantAtlas Software. One copy per company only.

DOWNLOAD THE FREE TRIAL
TODAY

Offer Ends July 31st 2008



Think a work colleague would be interested in InstantAtlas?
Why not **FORWARD** this monthly bulletin to them

This e-mail and any attachments are confidential and may be protected by legal, professional or other privilege. If you are not the intended recipient you should not store it, copy it, re-transmit it, use it or disclose its contents, but should return it to the sender immediately and delete your copy from your system. The views expressed are those of the sender and not necessarily those of GeoWise Limited.

Please note that whilst we scan all e-mails for viruses we cannot guarantee that any e-mail is virus-free. Please be advised that we expressly reserve the right to monitor email content for the purposes of ensuring compliance with legal requirements and company policies and your sending to, or receiving from, us of any email constitutes your agreement to these terms.

GeoWise Limited, Quality Court, 28 Maritime Lane, Edinburgh, United Kingdom | Company No. SC177156
GeoWise Limited | Privacy Policy | Tel: +44 131 624 8935 | Fax +44 131 624 8936

[UNSUBSCRIBE](#) from GeoWise Marketing